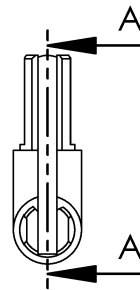


A-A

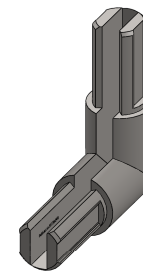
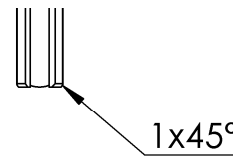
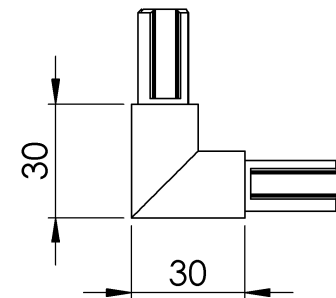


5

2x45°

11

R7,25



Name	Signatur	Datum	Artikelnummer	Oberfläche: Geschliffen Korn 240
Ch. Höfig	CH	24.11.2015	<b>55320-240</b>	
Werkstoff: 1.4301 (X5CrNi18-10)			Hersteller	Blattformat
			 Qualitätsprodukte aus Edelstahl, Stahl und Schmiedeeisen	A4
Gewicht 0,091 kg			Massstab: 1:2	Blatt 1 von 1