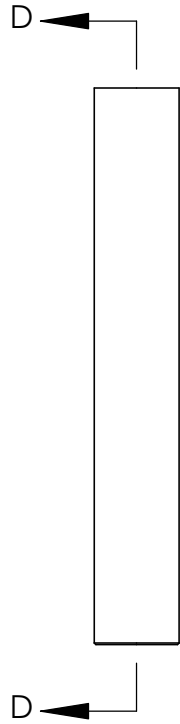
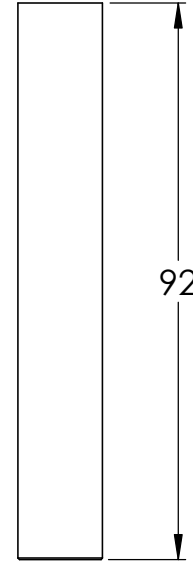


SCHNITT D-D



M6

$\varnothing 14 \begin{matrix} 0 \\ -0,20 \end{matrix}$



| | | |
|---|-----------------|---|
| 4 | 50370-240 Teil3 | 1 |
| 5 | DIN7991 M6x14 | 1 |
| 6 | DIN 913 M5x5 | 1 |
| 7 | DIN 914 M5x5 | 1 |

